

> QR Code reader

APPLICATION NOTE

ONLine Access

This application note explain how to configure QR Reader and create QR Code for users at PROS CS Software.

A070

This User Manual describes how to configure the readers with QR Code scanner and how to create QR Code for users.

Encrypted QR Code is a feature where the QR Code is an encrypted array of data that is not readable. This will prevent malicious intent to generate ID's that can be used in your system. However, this is not a protection if the QR Code image is copied and the copy is used for access. In this case, simply change the User ID and send him a new QR code.

QRKey is a key that will make a difference between your system and other systems using this feature.

Required items:

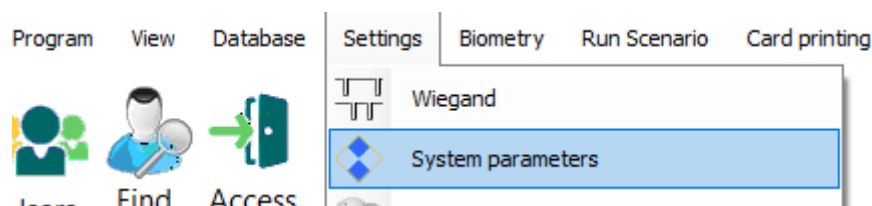
1. XP series reader with QR Code scanner.
2. PROS CS Software version 6.4.5.0 or newer.
3. USB cable type C. Make sure the cable supports data transfer. If the PC cannot establish connection with the reader, change the cable.
4. PROX-USB-X Desktop reader and separate Mifare Desfire card if you want to configure the reader with card



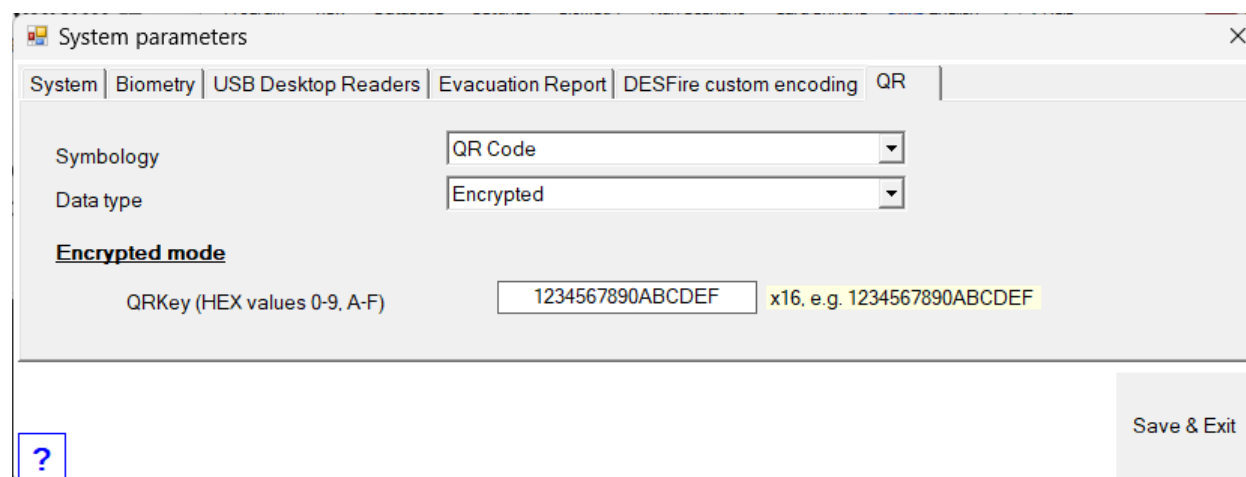
> QR Code reader

1. Setup QR Code system parameters

- Select menu Settings/System parameters



- At the parameters window, select QR tab

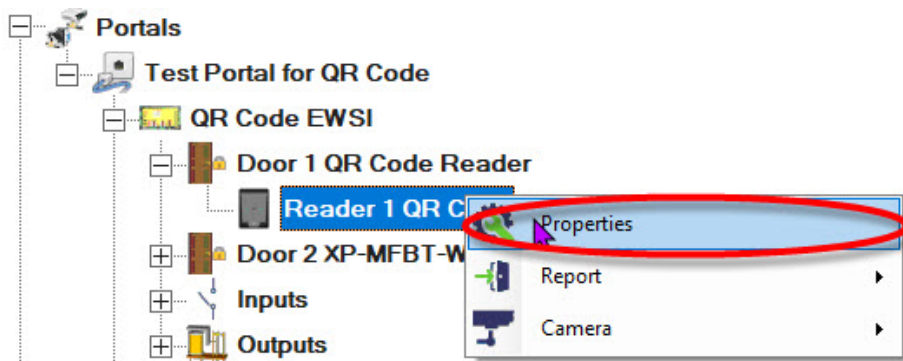


- Set the configuration as in image above.
- Type QRKey in the hexadecimal format with 16 characters size. This key will be transferred to readers in the next chapter. Avoid simple keys (as 1234... or 0000...).
- Click on Save & Exit tab.

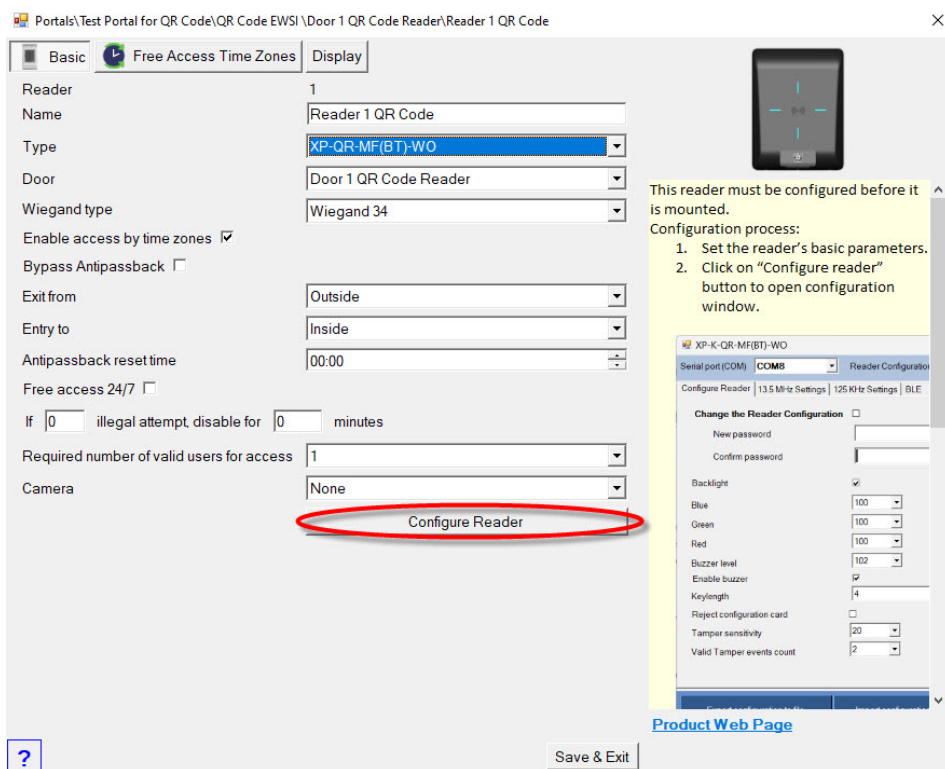
2. Configuring the reader.

This procedure must be done after step 1.

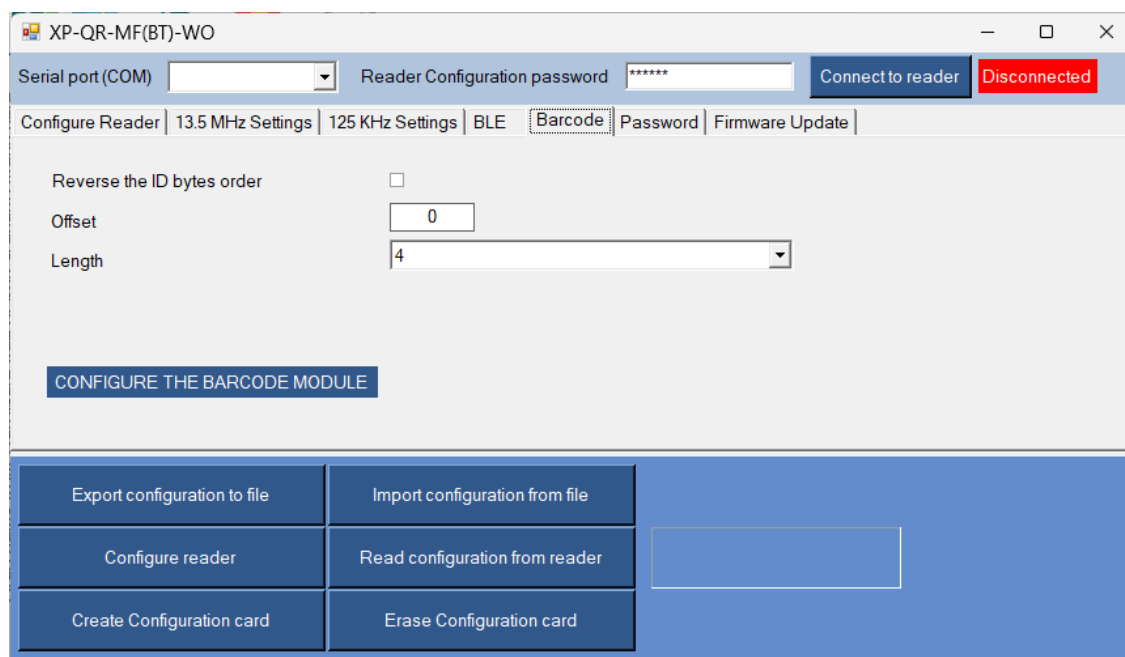
- Connect the reader to PC USB port.
- Click on reader which need to be configured and select **"Properties"**.



- Select the correct reader model and the parameters you need.
- For the Wiegand type item select Wiegand 34. Click on **"Configure Reader"** tab.



- Select the Barcode tab and set items as in the image below.

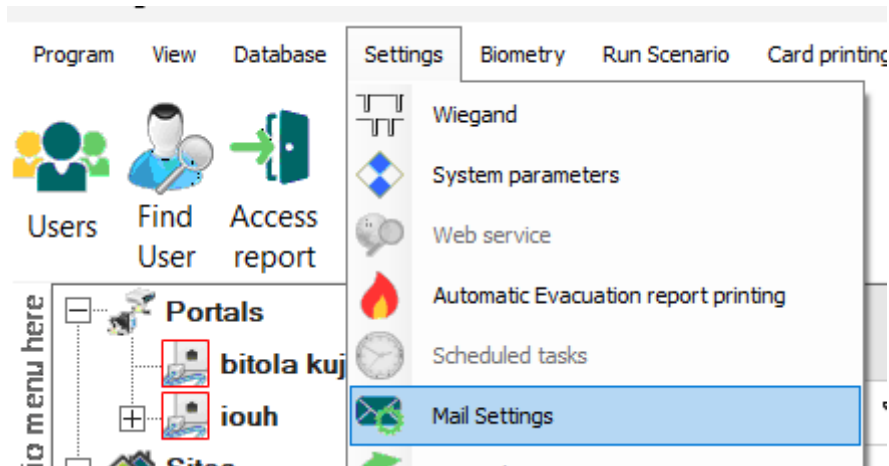


- Click on "Configure reader" tab to configure the reader.

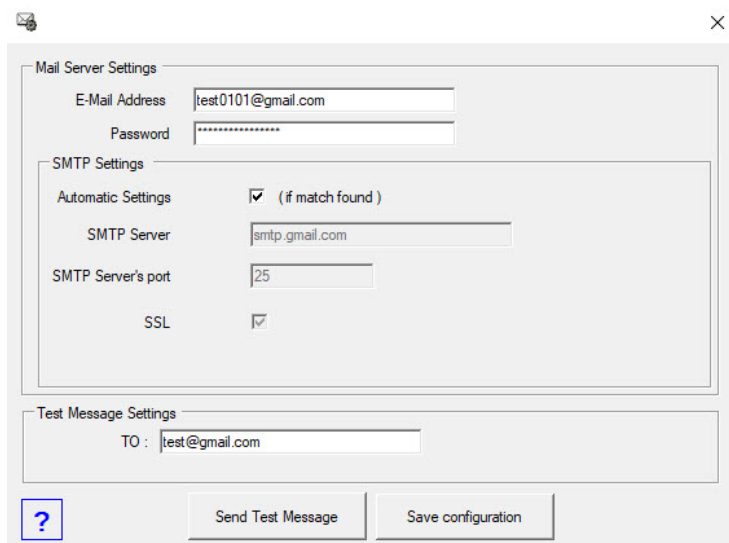
3. Mail settings for sending QR Code to user and QR Code credentials

Follow this procedure if you want to send QR code to user by email.

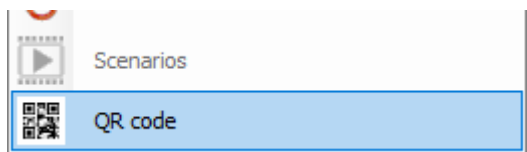
- Select menu **“Settings/Mail settings”**.



- Setup your email server parameters.



- Click on “Save configuration” tab to save and close the window.
- Select menu **“Settings/QR Code”**.



- Set up the mail subject and test. You can use predefined symbols in the text to insert variable items.

QR code

Mail subject

Message text before QR code

Message text after QR code

Symbols: {U} = User name, {ID} = ID, {ST} = Validity start ime, {SD} = Validity start date, {ET} = Validity expire time, {ED} = Validity expire date.

Save & Exit

- Click on "Save & Exit" tab to close the window.

4. Adding the QR Code credential to user.

- Open users window.
- Create new or use existing users.
- In the available User ID's items create and save the new QR Code ID.

Users count: 3 / 4

Name

ID

Name
 Angel
 Dimal
 martin@gmail

Card Type: MIFARE

Basic

Text Log

User ID (Card number)	Site code	User code	Wiegand 26	Type
12345678	188	24910	1234567 188 24910	QR Code
0	0	0	0 0 0	
Card ID 3				

Users Filters

Cancel Save

- When user is saved, click on the mail tab  to open the QR Code generator.

Send mail to Angel

E-Mail Address: joncicpredrag@gmail.com

Mail subject: QR access tag

User: Angel, ID: 0000000012345678



Valid Until: 00:00, Thursday, 31.12.2099

Mail Copy

If the user already has email address set in user details, the same address will be in the Mail address tab.
If not, enter the email address manually.

You can edit all other text fields manually if needed.

- Click on Mail tab to send the mail to user.
- Click on Copy tab to copy the QR Code image to clipboard.