

Custom Card Encryption Guide for PROX-USB-X (Mifare Classic & Desfire) for WS4 Solution

APPLICATION NOTE

C028

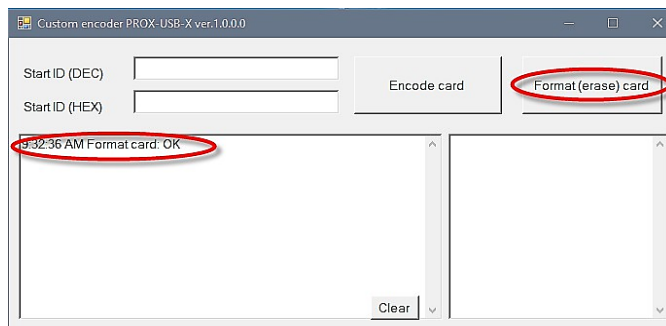
WS4 solution

This application note explain how to configure Custom Encoder PROX-USB-X Mifare Desfire and Mifare Classic Custom Encrypted card for WS4 Solution.

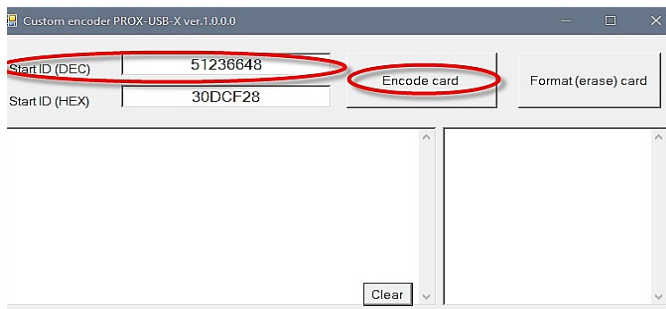
Creating Mifare Desfire Custom Encrypted card using PROX-USB-X desktop reader

Download Custom Encoder PROX-USB-X

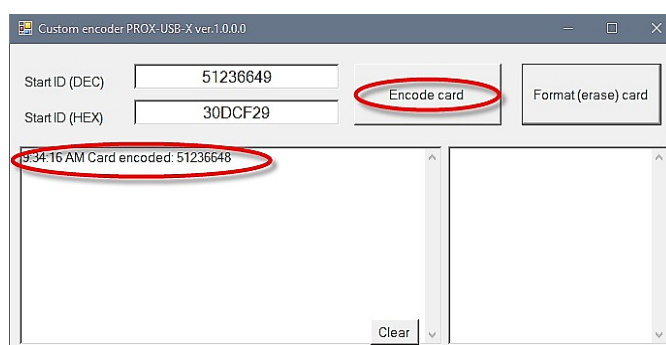
1. Open Custom encoder PROX-USB-X.
2. Place the card on top of the PROX-USB-X desktop reader.
3. If you want to format card, click on "Format (erase) card tab".
4. Format card OK message will appear at the blank field.



5. Type at the field "Start ID (DEC)" number for the card or at the field "Start ID (HEX)" type HEXA number".
6. Click on "Encode card" tab.

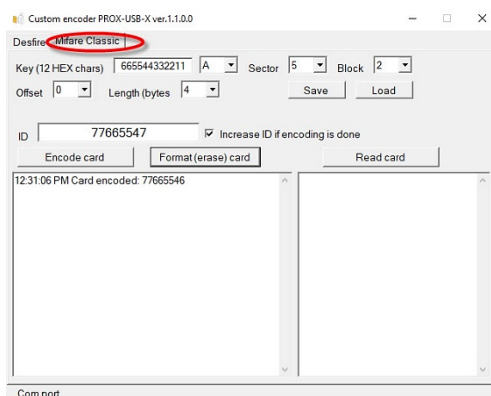


7. Card is encoded and message will appear at the blank field.
8. At field "Start ID (DEC)" next in line number for encoding will be visible. If you want to continuous with card encoding click on "Encode card" or type at the field "Start ID (DEC)" new number.

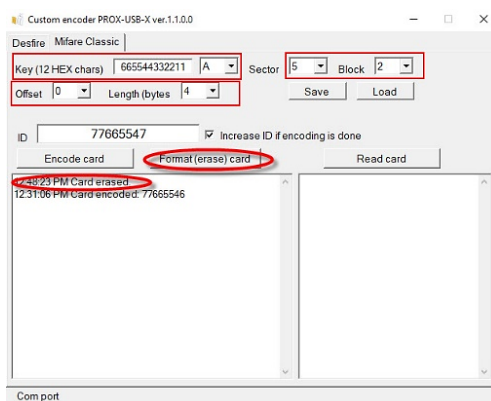


Creating Mifare Classic Custom Encrypted card using PROX-USB-X desktop reader

1. Open Custom encoder PROX-USB-X.
2. Select section "Mifare Classic".



3. Place the card on top of the PROX-USB-X desktop reader.
4. If you want to format card first you must to enter all custom encryption parameters when Mifare Classic card for created and then click on "Format (erase) card" tab".



5. Card erased message will appear at the blank field.
6. Place the card on top of the PROX-USB-X desktop reader.
7. If you want to create Mifare Classic Custom card first you must to enter all custom encryption parameters, place the card on top of the PROX-USB-X desktop reader and click on "Encode card" tab.
8. At section ID you can type length (bytes) when you create the card, and at section "ID" type the number which need to be used for Mifare Classic Custom card.

