

Xpro and Xsmart reader configuration for Encrypted Mifare Desfire and Mifare Classic card using Product Manager WS4

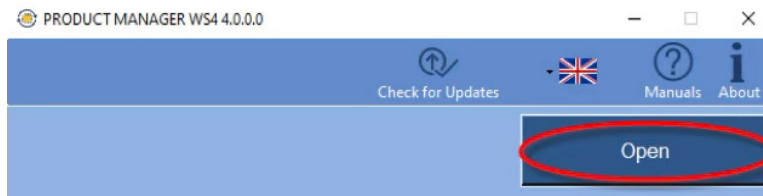
APPLICATION NOTE

C029

This application note explain how to configure **XPRO** and Xsmart reader to be configured to read encrypted Mifare Desfire and Mifare Classic cards.

Configuring Xpro and Xsmart reader to read Custom Encrypted Mifare Desfire cards for WS4 using Product Manager WS4

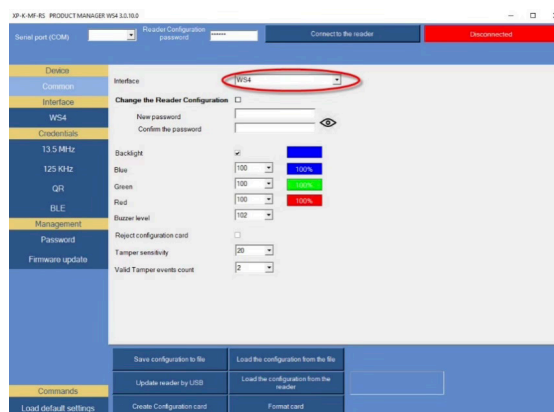
1. Open Product Manager WS4 and click at "Open" tab.



2. Important !

Please upgrade the device firmware first to the latest version before you have started configuring the reader and all the parameters are set for configuring the reader and you want to configure the reader via the "Update Reader via USB" tab.

3. Select "Interface" to "WS4" and other settings at the screen.

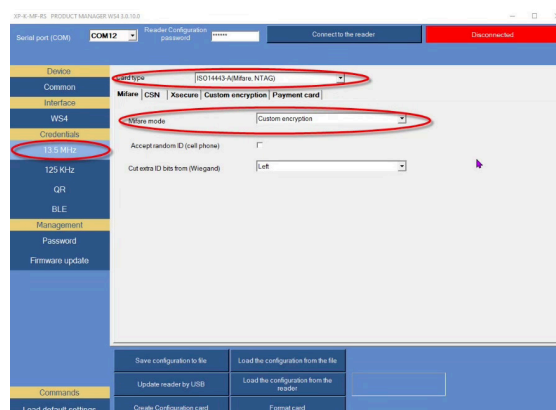


4. Then you can use "Update reader by USB" tab if reader is connected at USB or you can create Configuration card and use for reader configuration.

5. Select section "13,5Mhz" and at section "Card type" select "ISO 14443A (Mifare,NTAG)".

6. At section "Mifare Mode" select "Custom encryption".

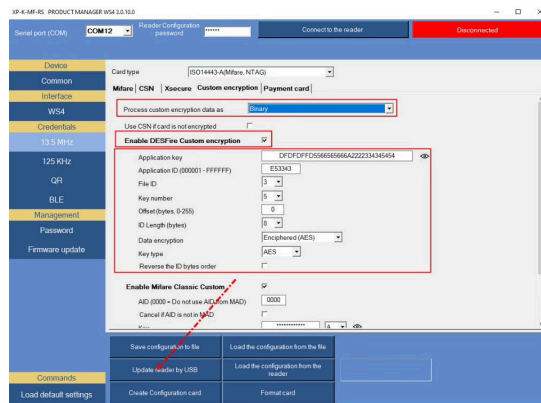
7. Then you can vuse "Update reader by USB" tab if reader is connected at USB or you can create Configuration card and use for reader configuration.



8. Go at section “Custom encryption” and insert all value as per picture.

Note

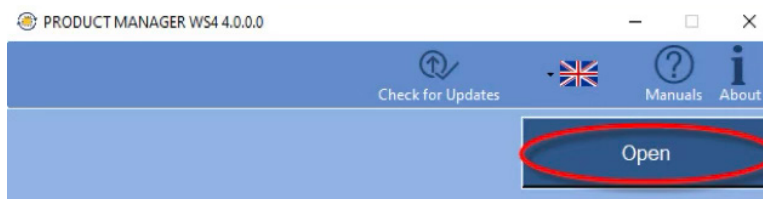
Value showing at picture are only for explanation purpose and they are not for valid use. Advice your client to make his own value for Custom encryption.



9. After all value are already entered, then you can use “Update reader by USB” tab if reader is connected at USB or you can create Configuration card and use for reader configuration.

Configuring Xpro and Xsmart reader to read Custom Encrypted Mifare Classic cards for WS4 using Product Manager WS4

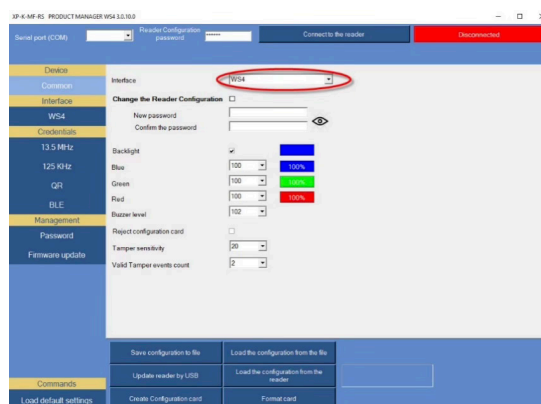
1. Open Product Manager WS4 and click at “Open” tab.



2. Important

Please upgrade the device firmware first to the latest version before you have started configuring the reader and all the parameters are set for configuring the reader and you want to configure the reader via the “Update Reader via USB” tab.

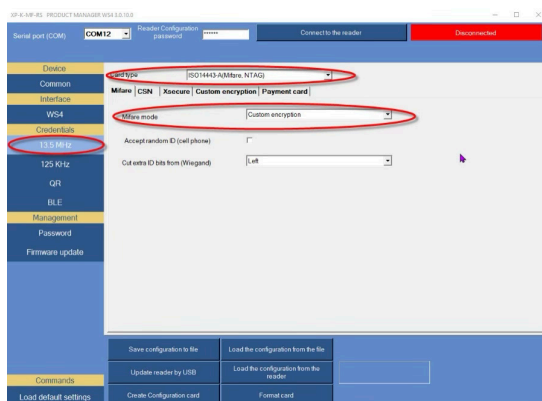
3. Select “Interface” to “WS4” and other settings at the screen.



4. Then you can use “Update reader by USB” tab if reader is connected at USB or you can create Configuration card and use for reader configuration.

5. Select section “13,5Mhz” and at section “Card type” select “ISO 14443A (Mifare,NTAG)”.

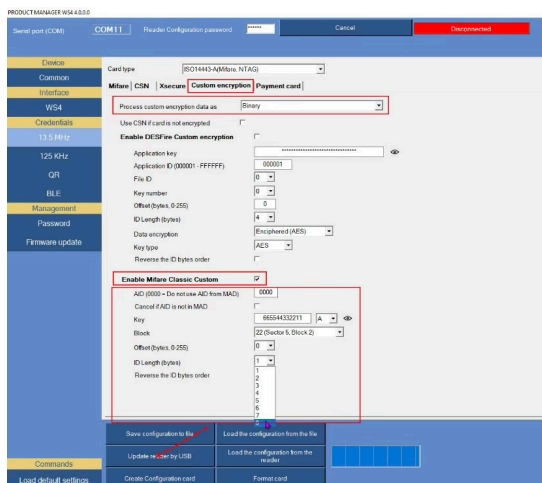
6. At section “Mifare Mode” select “Custom Encryption”.
7. Then you can use “Update reader by USB” tab if reader is connected at USB or you can create Configuration card and use for reader configuration.



8. Go at section “Custom encryption” and insert all value as per picture.

Note

Value showing at picture are only for explanation purpose and they are not for valid use. Advice your client to make his own value for Custom encryption.



9. After all value are already entered, then you can use “Update reader by USB” tab if reader is connected at USB or you can create Configuration card and use for reader configuration.