

# Product Manager WS4 Configuration Manual for Xpro and Xsmart Readers



Required items:

1. Micro USB cable or USB type C, depending on the reader model. Make sure the cable supports data transfer. Change the cable if the PC cannot connect with the reader. The cable is required if the programming is done by direct connection with the PC.

2. [PROX-USB-X](#) desktop reader (optional) and a new Mifare DESFire card. These items are required in case the programming is done by the Mifare DESFire card. The programming card will work only if the reader is set to read ISO 14443 (Mifare, NTAG) cards.

**Note:** Models that don't support 13.5 MHz credentials can be programmed only by USB.

**Important!!!** Keep your password in a safe place. Passwords can contain letters and numbers. Upper and lowercase letters will be considered as different keys.

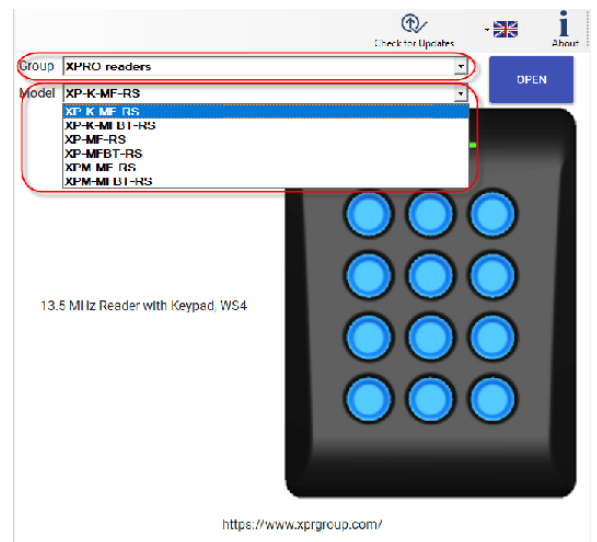
EN



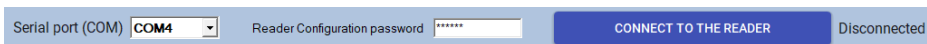
## 1. CONFIGURE THE READER USING A USB CABLE

**Note:** This step is required if you want to configure the reader by USB cable.

- Run the application.
- Select the "Group" and "Model" of your reader and click the "OPEN" tab.



- Connect the reader to the PC's USB port.
- On the top left corner, the "Port" value will be set to reader COM port. Change the USB cable if this field remains empty after connecting the reader.

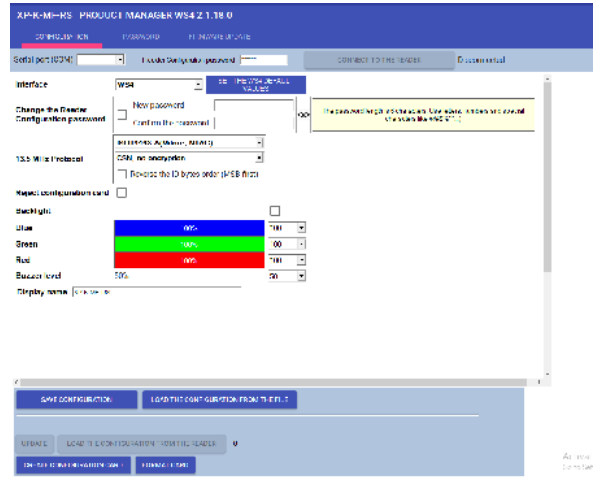


- Click the "Connect to the reader" tab.



- After connecting the device, you can transfer the settings from and to the device.

- Configure the parameters you need and click the “Update” tab to transfer the settings onto the reader with a USB cable.
- Disconnect the reader from the USB port and make a test with the Controller.



## 2. CONFIGURE THE READER WITH A MIFARE DESFIRE CARD/FOB USING THE PROX-USB-X DESKTOP ENROLLMENT UNIT

This is an option to configure and upload the required settings onto the reader if it is already installed and powered on-site.

**Only for reader models with 13.5 MHz functions.**

- Connect the desktop reader to the PC.
- Set up the configuration requested in the software.
- Place the card/fob on the PROX-USB-X enrollment device and click the “Create Configuration Card” tab.

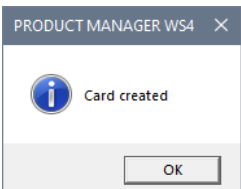


### CREATE CONFIGURATION CARD

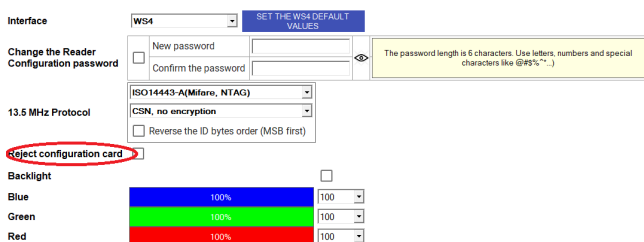
- After selecting the “Create Configuration Card” tab, the reader configuration password can also be set. By default, the password for reader configuration is “000000”.



- Set the password for the reader configuration.
- Click the “Continue” tab. A new window will pop up with the message “Card Created”.



- If you want to disable the reader configuration by card, check “Reject configuration card” option in the Setting.



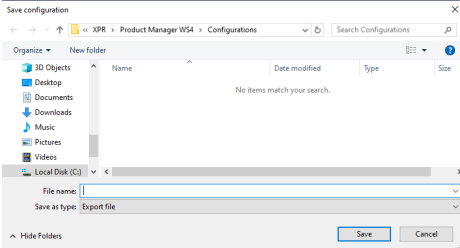
### 3. SAVE CONFIGURATION TO FILE

**Note:** This step is not mandatory. Use it if you want to save the configuration for later use.

- Click the “Save configuration” tab to open the file save window.

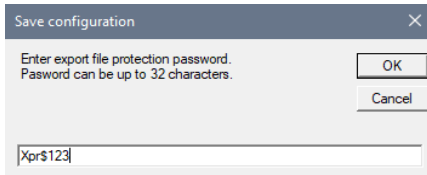


- Type the file’s name in the “File name” window.



- Click the “Save” tab.  
Enter the password for file protection.

**Important!** If the password is lost, there is no way to retrieve the configuration from the file.

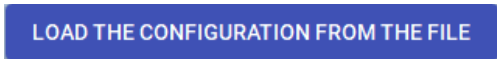


- Click the “OK” tab to save the settings file. If the file is saved, a confirmation message will appear.

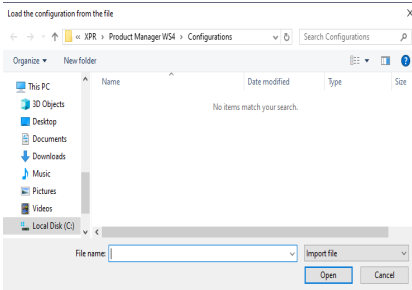
### 4. LOAD THE CONFIGURATION FROM THE FILE

**Note:** Use this step if you have already saved the configuration that you need.

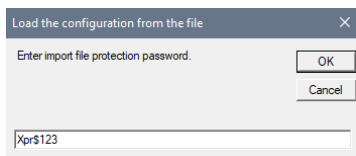
- Click the “Load the configuration from the file” tab.



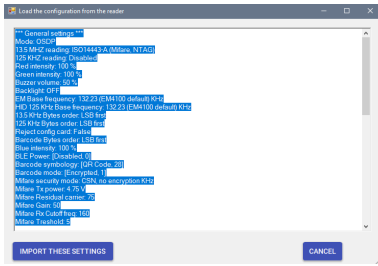
- Select the file with the required settings.



- Click the “Open” tab.  
• Enter the file protection password.



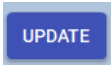
- Click the “OK” tab.
- Click the “Import these settings” tab.



- Click the “OK” tab.

## 5. TRANSFER SETTINGS TO THE READER

- Click the “Update” tab to transfer the settings to the reader.



## 6. LOAD THE CONFIGURATION FROM THE READER

**Note:** Use this step if you want to check the reader configuration or to copy it to another reader.

- Click the “Load the configuration from the reader” tab to load the current configuration from the reader.

LOAD THE CONFIGURATION FROM THE READER

**Important!!!** Custom Encryption settings will not be loaded from the reader.

- Click the “Import these settings” tab if you want to load this configuration into the software (Custom encryption parameters have to be set manually).



## 7. CONFIGURE THE READER TO USE XSECURE ENCRYPTED CARD

- Set the 13.5 MHz protocol to “ISO14443-A (Mifare, NTAG)”.
- Set the ID type to “Xsecure”.
- After other settings are configured, use some of the described options to configure the reader.

