

>DINPAD-M

FLUSH MOUNT MULTIPROTOCOL KEYPAD

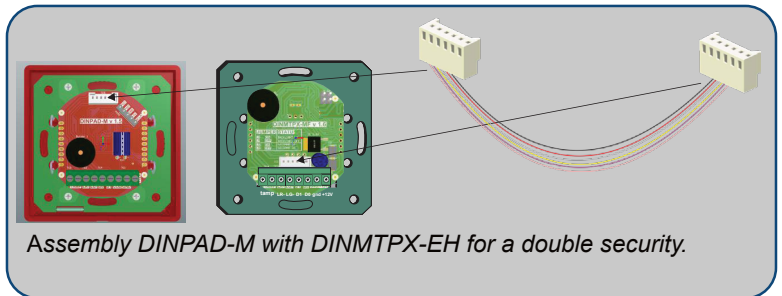
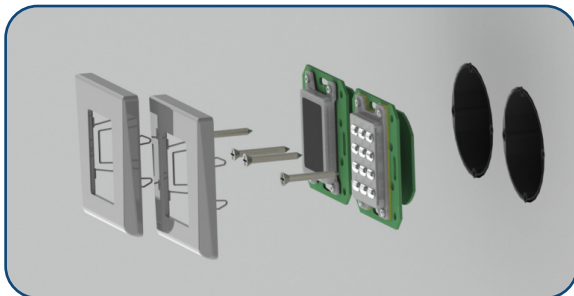
The multi-protocol peripheral keypad comes with a selectable PIN Code length. It can be connected to DINMTPX-M reader for double security reader (Card and/or PIN Code) or DINB100 (Finger and/or PIN Code).

FEATURES

- Mounting: Flush
- Housing: ABS mask (sold separately)
- Technology: Keypad
- Protocol: Multiprotocol - compatible with Wiegand 26, 30, 34, 40 bits, Clock & Data or Codix
- Keys: Backlit
- Visible signal: Green LED: Access granted
Orange LED: Idle mode
Red LED: Access denied
- Buzzer: Yes, on every touch
- Tamper protection: Yes
- Power supply: 12 V DC
- Current consumption: 70 mA

ENVIRONMENTAL FEATURES

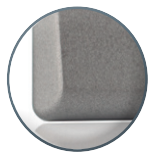
- Operating temperature: -20°C to +50°C
- Operating humidity: 5% to 95% (non-condensing)
- IP rating: IP40



COLOURS



DINPADS-M
Silver



DINPADC-M
Charcoal



DINPADW-M
White

DIMENSIONS & WEIGHT

